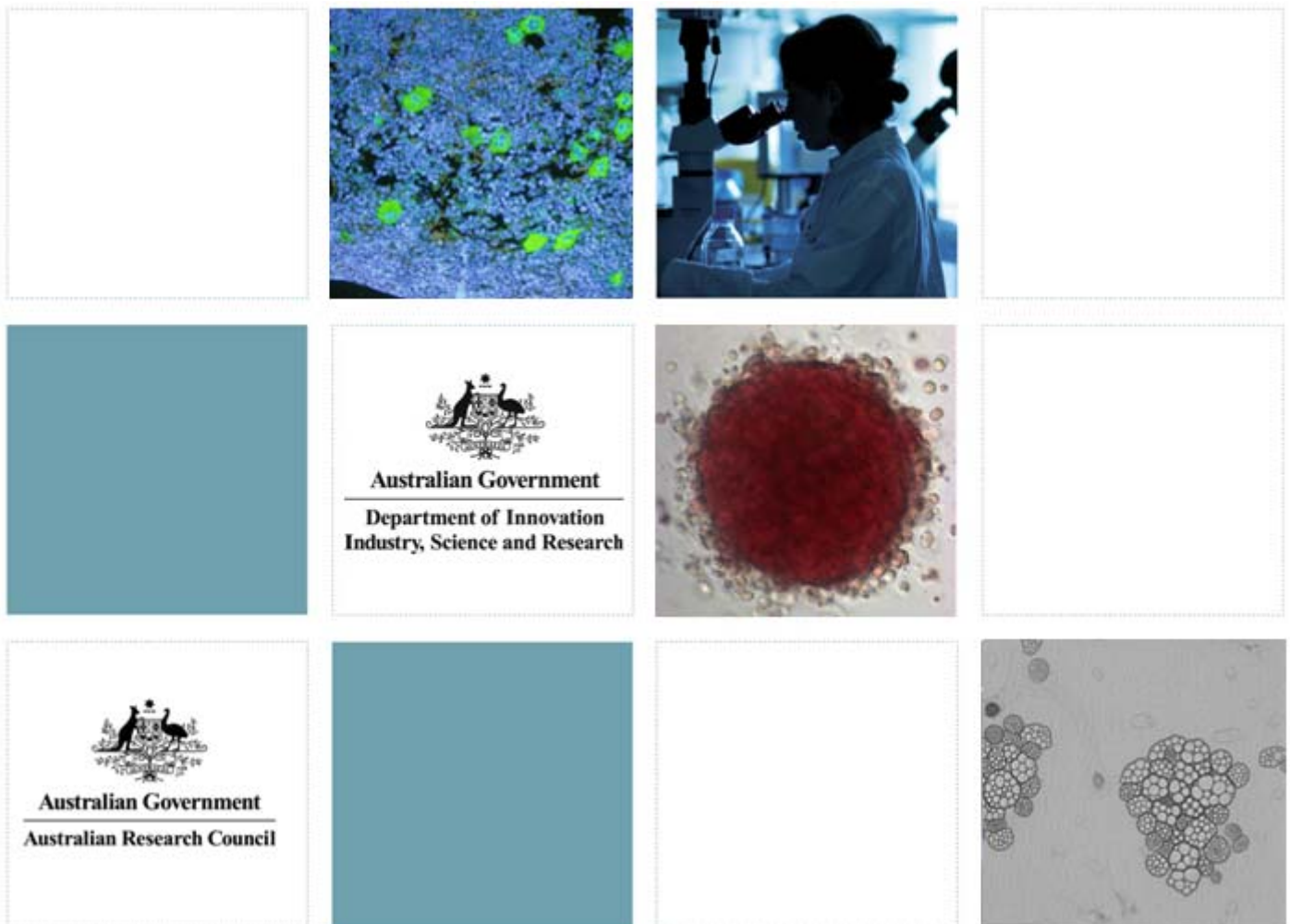




Australian  
Stem Cell  
Centre

# Strategic Plan

## 2009-2013



## Contents

<b>1</b>	<b>Australian Stem Cell Centre: 2002 to 2008</b>	<b>3</b>
<b>2</b>	<b>Mission, Objectives and Values</b>	<b>4</b>
<b>3</b>	<b>Strategy Overview</b>	<b>5</b>
<b>4</b>	<b>The Scientific Landscape</b>	<b>6</b>
<b>5</b>	<b>ASCC Activities and Outcomes – July 2009 to June 2011</b>	<b>7</b>
<b>6</b>	<b>Long Term Value Proposition</b>	<b>8</b>
<b>7</b>	<b>Operational Framework</b>	<b>8</b>
<b>8</b>	<b>Financial Resource Allocation (2 Years to 30 June 2011)</b>	<b>8</b>
<b>9</b>	<b>Research Strategy - Funding Excellence and Innovation</b>	<b>9</b>
<b>10</b>	<b>Collaborative Streams – Excellence in Australian Stem Cell Research</b>	<b>10</b>
<b>11</b>	<b>Research Translation &amp; IP Management</b>	<b>11</b>
<b>12</b>	<b>Enabling Activities</b>	<b>12</b>
<b>13</b>	<b>Governance</b>	<b>14</b>
<b>14</b>	<b>Focus on the Future</b>	<b>15</b>

## 1 Australian Stem Cell Centre: 2002 to 2008

The Australian Stem Cell Centre (ASCC) was founded to capitalise on Australia's significant strengths in the field of stem cell research. The ASCC was selected in 2002, in a competitive bid process, as Australia's Biotechnology Centre of Excellence (BCE), an initiative of the Australian Government. The Centre provides a unique national resource for stem cell researchers to deliver outcomes that benefit the wider Australian scientific environment and biotechnology industry and will ultimately contribute innovative solutions to human health challenges.

The Centre is a not-for-profit public Company limited by Guarantee and was established with the financial and in-kind support of a number of institutions of which the current voting Members are: Monash University, University of Queensland, Howard Florey Institute and University of Adelaide, and the non-voting Stakeholders are: University of Melbourne, Baker IDI, Murdoch Children's Research Institute, Victor Chang Cardiac Research Institute and Mater Medical Research Institute.

The ASCC is governed by a skills based Board of Directors with independent scientific oversight and support from an eminent Scientific Advisory Board.

Total funding of around \$100 million has been awarded to the ASCC by the Australian Government and is administered by the Australian Research Council and the Department of Innovation, Industry, Science and Research. The funding is provided in instalments from 2002 to 2011. To complement Australian Government funding, the State Government of Victoria's Science Technology and Innovation program awarded the Australian Stem Cell Centre a further \$11 million to support key infrastructure in Victoria.

Together the ASCC and partnering organisations support Australian stem cell research that is internationally competitive. The ASCC currently funds research at leading institutes and universities in Victoria, Queensland, South Australia and New South Wales with the major hubs of activity centred in Victoria and Queensland. By providing stem cell specific funding, the Centre in its first seven years of operation has supported in excess of 200 researchers and more than 70 students in over 30 research projects across Australia. This focused approach to fostering an emerging scientific field has ensured that Australia has retained a significant intellectual mass and international presence in the stem cell arena.

The international standing of ASCC funded research is reflected in growing research outputs in terms of publications and invitations to present work at international and national meetings. The Australian stem cell research environment is an incubator of talented individuals, as demonstrated by international research collaborations and recruitment of Australian stem cell scientists by overseas institutes and research organisations.

Through constructive relationships developed with the broad scientific community, industry, government, media and the general public, the ASCC has enhanced understanding of stem cells and their uses for legislators, and the public. This has contributed to Australia's standing as one of the most effectively regulated locations to conduct stem cell research in the world. The ASCC has played and continues to play a significant part in catalysing debate through the provision of factual scientific information to the public, federal and state governments and media during the development of legislation covering the creation of human embryonic stem cells.

As part of its legacy from the BCE funding, the ASCC will seek to consolidate these achievements as a key partner in a comprehensive strategy to sustain and enhance Australia's excellence in stem cell research well beyond the life of the current funding. Future endeavours will focus on partnering and networking to fulfil the ASCCs Objectives and ultimately to realise the ASCCs mission of understanding and employing stem cells and related technologies to meet human health challenges.

## 2 Mission, Objectives and Values

### Mission

To sustain and enhance Australia's excellence and capabilities in stem cell research and to generate innovative solutions for meeting human health challenges.

### Objectives

- I **Position** Australian stem cell research for excellence, sustainability and international competitiveness.
- II **Facilitate** and participate in the translation and commercialisation of stem cell research outcomes for Australian economic benefit and public good.
- III **Disseminate** technical expertise and resources to realise the value of stem cells to the broader research and biotechnology sectors.
- IV **Enhance** public understanding of stem cells and their potential.

**The ASCC will achieve these objectives by conducting all business in a fair, ethical and diligent manner.**

### Values

#### **Excellence**

Ensure excellence in scientific research through funded researchers producing publications, selected peer-review presentations and translational outputs

#### **Unity**

Recognise that our mission can only be met by teamwork and forming effective collaborations between research, biotechnology and public sectors

#### **Integrity**

Ensure that all activities meet the highest standards for responsible conduct

#### **Innovation**

Facilitate a culture where initiative and innovation are highly valued

#### **Openness**

Ensure that the Centre conducts all activities in an open, consultative and timely manner

#### **Accountability**

Ensure that the Centre is accountable for decisions made at all levels of its operations and is responsive to feedback of performance

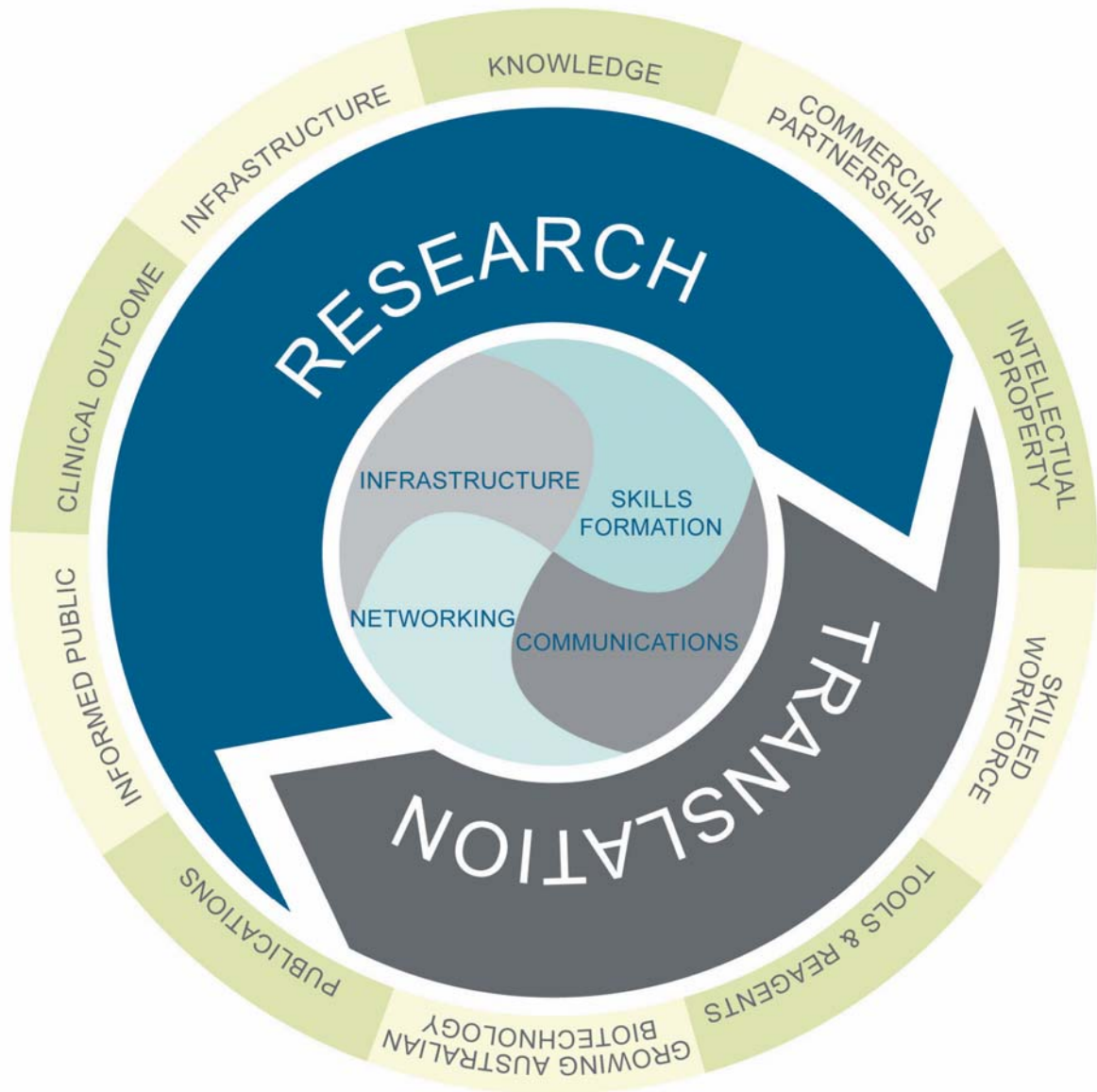
#### **Fairness**

Ensure all activities are performed without bias and ensure an equitable outcome for all parties

**The ASCC will foster and encourage these values throughout the organisation in order to achieve its strategic objectives**

### 3 Strategy Overview

Interlocking stem cell research and translation cycle that drives the strategy and operations of the ASCC



**Key:**

- OUTCOMES
- LEGACIES

## 4 The Scientific Landscape

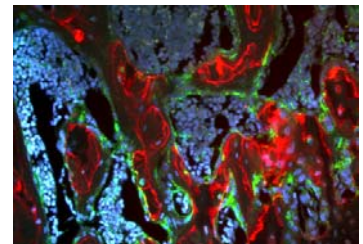
The history of stem cells is relatively short. Stem cells were first used clinically in bone marrow transplants in the 1950s and 1960s. Subsequently, adult stem cell research has progressed with bone marrow transplants becoming part of standard clinical practice and increasing evidence that stem cells can be found in all tissues of the body. Clinical research is also encompassing mesenchymal, skin, corneal and cartilage stem cells.

In 1998 stem cell research moved to another level when the first paper was published in Science, describing the characteristics of human embryonic stem cell (hESC) lines. Since the discovery of hESCs and the subsequent inception of the ASCC in 2002, stem cell research has become an extremely fast moving field with the pace of breakthroughs accelerating. Several of these stand out as having either transformed the scientific landscape or illustrated the potential of this technology.

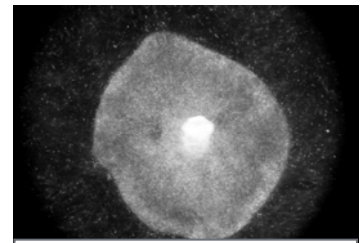
Undoubtedly, reprogramming of adult cells back to a pluripotent stem cell – referred to as an induced pluripotent stem (iPS) cell - has been one of the most significant advances of the past ten years. First published in 2006 using adult mouse cells, this technology was quickly applied to human stem cells. iPS technology is advancing swiftly, and in 2008 several groups published papers describing the creation of iPS lines from skin cells taken from patients suffering from a variety of diseases. Reprogramming was named as 'Breakthrough of the Year' by the journal Science in 2008.

The majority of current stem cell clinical trials involve adult stem cells, typically haematopoietic stem cells from bone marrow or cord blood with early applications for embryonic stem cells beginning to appear. In January 2009, the US Food and Drug Administration granted clearance to US company Geron to commence the world's first study of a hESC based therapy in humans. It is early days for this technology with these initial Phase I studies aimed at establishing safety, but Geron's ultimate target are patients with acute spinal cord injury using cells derived from hESCs. There have also been advances in other areas using adult stem cells and stem cell technology is edging closer to clinical outcomes. Nevertheless, there remain many significant biological questions to be answered and much research to be undertaken before stem cells enter routine therapeutic practice.

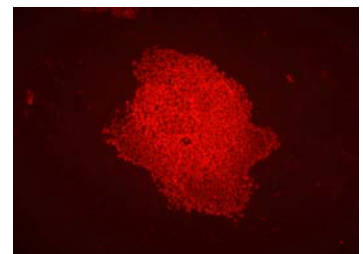
The tremendous promise of the technology and the rapidly developing scientific landscape creates challenges and opportunities for the ASCC. Flexibility and responsiveness are therefore key to the Centre's strategy to ensure it can respond to new challenges and enhance its position in the field.



Adult mouse bone marrow



MEL-1 human embryonic stem cell colony



Induced pluripotent human stem cells

## 5 ASCC Activities and Outcomes – July 2009 to June 2011

Area	Activity	Measures of Progress
Research	<p>Establish and guide Collaborative Streams with the aim of positioning Australian research for sustainability through excellence</p> <p>Create a Strategic Development Fund to support new and emerging areas of stem cell research</p> <p>Relocate ASCC intramural researchers to new host institutes with minimal research impact</p>	<p>Increasing numbers of:</p> <ul style="list-style-type: none"> <li>high impact publications</li> <li>abstracts</li> <li>presentations</li> </ul>
Translation	<p>Facilitate translation activities on a case-by-case basis</p> <p>Develop and implement a broad range of educational activities for IP and commercialisation</p>	<p>Increasing numbers of:</p> <ul style="list-style-type: none"> <li>commercial engagements</li> <li>partnerships</li> <li>activities to promote an IP aware culture</li> </ul>
Networking	<p>Maximise and utilise network opportunities for the promotion and benefit of Australian stem cell science</p> <p>Use the national and international networks to monitor external developments and to capitalise on existing and new opportunities</p> <p>Encourage the development of clusters of research excellence in key areas in Australia</p>	<p>Increasing numbers of ASCC funded researchers:</p> <ul style="list-style-type: none"> <li>making invited presentations at national and international conferences</li> <li>being appointed to scientific editorial or society boards and committees</li> </ul>
Research Services and Infrastructure	<p>Develop a National Stem Cell Facility for the provision of products, services and training to the stem cell research Community</p> <p>Continue the provision of high quality Flow Cytometry services in Melbourne</p> <p>Provide a high quality laboratory environment for stem cell research to complement the National Stem Cell Facility and encourage a hub of co-located collaborative research</p>	<p>Growth in:</p> <ul style="list-style-type: none"> <li>numbers of users of services and infrastructure</li> <li>expansion of range of products and services offered</li> <li>increasing customer satisfaction</li> </ul>
Skills Formation	<p>Attract and support high quality postgraduate students in the stem cell research field</p> <p>Provide training opportunities for scientists to develop and increase their skills and knowledge</p>	<p>Increasing numbers of:</p> <ul style="list-style-type: none"> <li>supported students,</li> <li>travel awards and training activities</li> </ul>
Communications	<p>Improve public awareness and understanding of stem cells, and related research and technologies</p> <p>Improve the understanding of the legislative environment and its importance in to Australian stem cell research</p> <p>Facilitate greater public understanding and awareness of the clinical applications of stem cells as they become available</p>	<p>Increasing media presence measured by:</p> <ul style="list-style-type: none"> <li>press articles on stem cells and related research and technologies</li> <li>ASCC web site traffic</li> </ul>

## 6 Long Term Value Proposition

### Enabling Stem Cell Science

- Research excellence
- Expertise, facilities and a collaborative environment
- Enhancement of national capability
- Increasing public awareness and understanding

### Therapies and Outcomes

- Contribute to the fundamental understanding of stem cell biology
- Specific expertise in stem cell technology
- Integration in international networks providing access to the latest advances in the field

### Australian Economy

- Effective translation of research findings into commercial benefits
- Continued emphasis on translation
- Partnering for effective IP management and protection
- Forming relationships with industry to generate value from Australian research

## 7 Operational Framework

### Governance

- Skills based Board with strong understanding of ASCC core business and culture
- Two ASCC Member nominees on the Board
- Focused on building stronger Stakeholder relations
- Independent expert advisory boards in science

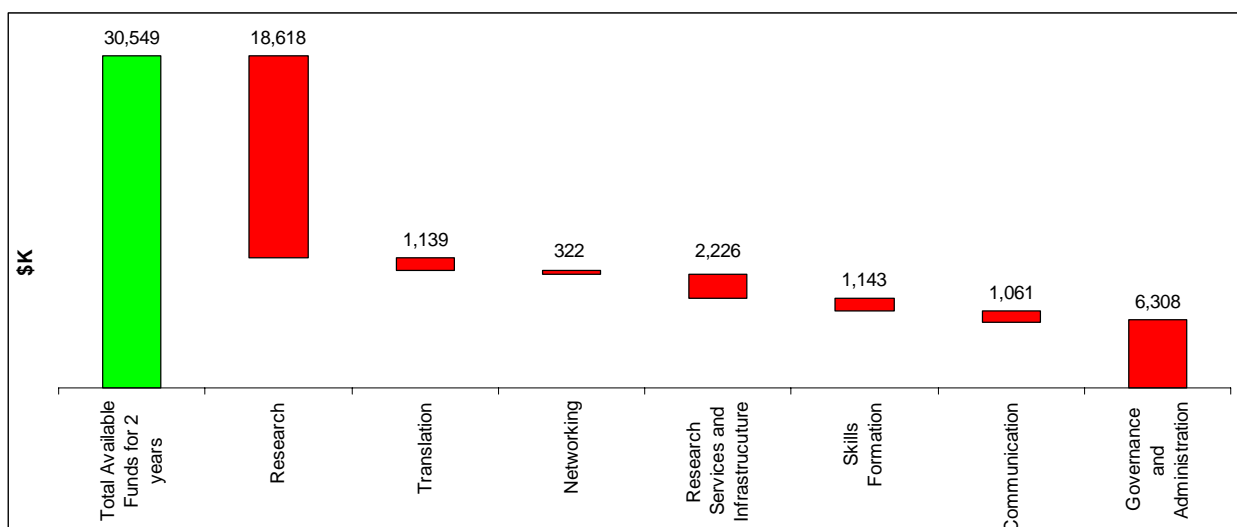
### Leadership & People

- Scientific Director and General Manager
- Strength in scientific leadership
- Business and operational support
- Small focused team of experienced staff

### Financial Management

- Balanced financial strategy for the period to 30 June 2011
- Focus on funding excellence in research
- Preparation for transition beyond current funding period

## 8 Financial Resource Allocation (2 Years to 30 June 2011)



## 9 Research Strategy - Funding Excellence and Innovation

The ASCC's research strategy will focus on two new initiatives to support and grow Australia's stem cell research effort – Collaborative Streams and the Strategic Development Fund. Both initiatives are grounded in the principles of stringent, competitive peer-review processes.

The restructure of ASCC funded research into **Collaborative Streams** is an innovative, transforming and effective way of funding and enhancing stem cell research in Australia. Each Collaborative Stream comprises a network of high calibre scientists with internationally recognised leadership focussed on working together to address key areas that will allow significant acceleration of stem cell research. Each Stream consists of 'Modules' or individual research projects representing the wide diversity of internationally competitive stem cell research across Australia.

The Collaborative Streams will aim to:

- operate synergistically to address key questions in each of the major themes of stem cell research
- identify and fill critical gaps in research
- respond to the fast-changing landscape of stem cell research
- maximise commercial advantage from the collective intellectual firepower and technical expertise of each Stream
- provide an entry and testing ground for new techniques
- create and sustain robust channels of collaboration and peer-to-peer communication across the stem cell research field in Australia
- position Australian stem cell research for future funding and realise long-term sustainability and international competitiveness.

The **Strategic Development Fund** will provide financial support to develop and accelerate new and innovative projects in stem cell research towards a well-defined goal. By awarding grants under this new scheme, the ASCC aims to:

- identify and invest in early stage, stand alone projects, for the delivery of a definitive outcome
- identify and invest in discrete projects that may have a short term commercial outcome or objective that would otherwise not be funded due to financial risk
- identify and invest in those projects that may fall within existing conventional funding gaps
- identify and invest in projects that may currently fall outside of an existing Collaborative Stream

**This fund will be launched in August 2009**

## 10 Collaborative Streams – Excellence in Australian Stem Cell Research

Following a call for applications, the review and selection of the Collaborative Streams was carried out by the ASCC's independent Scientific Advisory Board. The successful streams are representative of the depth and breadth of Australian stem cell research:

### Stream 1 - Bioreactors and Smart Surfaces for Stem Cell Propagation

For stem cells to be used as treatments for disease it is necessary to be able to grow them in large volumes, ensure they are safe and free from contaminants and be able to turn them into the right type of cell for clinical applications. Stream 1 will research various artificial surfaces and small molecules that recreate the natural environment, which are amenable to mass production and can be used to generate the large number of cells that could be used for clinical therapies.

### Stream 2 - Reprogramming and Induction of Pluripotency

Reprogramming of normal adult cells to pluripotent cells, known as iPS cells, is a significant advance in the stem cell field that may ultimately be used to better understand disease progression and develop possible treatments. Stream 2 brings together Australian researchers working with iPS cells to better understand the process of reprogramming, explore the use of iPS cells in regenerating heart and other tissues and test their therapeutic potential.

### Stream 3 - Pluripotent Stem Cell Differentiation

Human embryonic stem cells (hESC) rose to prominence because of their ability to differentiate into the hundreds of cell types that make up the human body. Stream 3 will look at the events that direct cells along pathways to specific cell types such as blood, heart or kidney. It will investigate how these processes can be modulated and turned to clinical advantage. Better understanding will allow the full potential of these cells to be realised for the understanding and possible treatment of disease.

### Stream 4 - Adult Stem Cell Program

Stem cells are now thought to reside in most, if not all organs in the adult body and are involved in day to day cellular maintenance and repair. Despite widely differing origins, locations and capabilities adult stem cells share many common features. This collaboration will seek to develop a common approach to their projects and provide conceptual support to other Streams, with the view that knowledge gained about stem cells in one organ will illuminate the behaviour of stem cells in other organs.

## 11 Research Translation & IP Management

The commercialisation of research activities is one of the most effective ways of maximising the benefits of Australian stem cell science in the generation of new solutions to human health challenges.

There is hope that stem cells will one day be used to treat degenerative disorders and to generate replacement tissues and organs. Aside from current treatments using haematopoietic, mesenchymal, skin, corneal and cartilage stem cells, there are many scientific and regulatory challenges to overcome: including issues of safety, efficacy, clinical application and long term follow up. For these reasons, stem cell therapies still remain a relatively distant prospect.

However, commercialisation of stem cell related technologies is an essential activity. In the short term, it is likely to yield new research tools and diagnostics. The ASCC aims to facilitate and participate in the translation and commercialisation of stem cell research outcomes for Australian economic benefit and public good.

In a key change to the ASCC, it will reposition itself away from being a sole owner and translator of its own intellectual property (IP) and move towards being a facilitator of IP development.

The ASCC's translation strategy will:

- facilitate the joint ownership of IP between collaborating and stakeholder institutions
- emphasise the effective translation of research into commercial and potential clinical benefits
- facilitate partnering with research institutions to ensure world class IP management and protection
- assist in the formation of strong relationships with companies in Australia and abroad with proven capacity to create commercial value from Australian research.
- create a culture of IP awareness that permeates the ASCC and all associated research groups at all employment levels
- increase in-licensing and cross licensing opportunities, establishing joint ventures and strategic alliances.

The ASCC's more flexible and strategic approach to IP management practices will result in more effective engagement with both national and international industry partners.

The ASCC will work to strengthen its ties with the Australian biotech industry and the global research tools industry with the aim of ensuring that opportunities emerging from its research or in industry can be efficiently matched to an appropriate partner.



## 12 Enabling Activities

To foster and support stem cell research in Australia the ASCC will continue to grow and support the enabling activities of: Research Services and Infrastructure, Skills Formation, Networking and Communications.

### Research Services and Infrastructure

Currently, the requirements of Australian research groups for the supply of pluripotent stem cells are predominantly catered for by an uncoordinated network of multiple in-house cell culture laboratories. The ASCC and its collaborators believe that the continued development of Australia's capabilities in stem cell research will be enhanced by the establishment of a coordinated approach to the production of pluripotent stem cell products, to training and to technology validation.

The ASCC currently operates two pluripotent stem cell core laboratories, located at Monash University and the University of Queensland, that supply collaborating laboratories with a range of pluripotent stem cell products. Additionally, these facilities also run introductory pluripotent stem cell training courses, which provide scientists with training in fundamental aspects of hESC and iPS cell culture and analysis.

This existing infrastructure and expertise will be leveraged to create a National Stem Cell Facility that will service the needs of the Australian stem cell research community via the provision of specialised stem cell products and services. The objectives of the Facility will include:

- providing services and support to the Australian research community and emerging biotechnology industry
- facilitating translational research outcomes by providing services to Facility users
- enhancing the national capabilities of stem cell research and technologies in Australia by providing training, guidance, services, reagents and overall coordination
- responding to the latest developments in the stem cell field to remain at the forefront of technology platforms and scientific knowledge.

The ASCC will also support stem cell research via FlowCore, a core flow cytometry facility that provides best-in-class flow cytometry services to research groups from Monash University, the ASCC and the Australian Regenerative Medicine Institute. Flow cytometry is a central technique for cell biology, and is indispensable for research into the biology of stem cells. In recognition of the need for a world class flow cytometry capability, in 2008 the ASCC and Monash University collaborated in the establishment of FlowCore. This facility is operated by ASCC personnel who have great expertise in the technology and its applications to stem cell research.



## Skills Formation - Growing and Developing the Stem Cell Workforce

To ensure the stem cell sector in Australia continues to grow and remain internationally competitive, it is essential that specific technical expertise is disseminated. The ASCC will continue to play a crucial role in the career development and skills acquisition of Australian stem cell researchers by:

- continuing to provide Supplementary Scholarships to high calibre postgraduate students
- providing International Travel Awards to junior investigators to present their work at national and international conferences and visit international laboratories
- enhancing collaborations for junior researchers through national and international network development
- offering short and long term training opportunities in pluripotent cell maintenance and manipulation
- providing training to enhance understanding of IP identification and capture
- assisting with career transition and development by providing opportunities for academic and technical interactions for researchers

## Networking

Stem cell research, like all other fields of science, does not operate in a vacuum; research and researchers must be highly interconnected and globalised. Research and development operates through both competition and cooperation and must be an international pursuit. Collaborations with scientists and organisations outside Australia play a valuable role in advancing Australian research and allow Australia to significantly leverage its financial and intellectual investment.

Through facilitation and funding of networking the ASCC continues its commitment to developing its links with important international networks for the promotion and benefit of Australian stem cell research. Networking and collaboration are also effective means for monitoring the external environment which impacts significantly on Australian research and the operations of the ASCC. A key objective of the ASCC networking activities will be to bring research groups together, with the aim of developing research clusters to share infrastructure, skills and ideas to accelerate Australian stem cell research.

## Communications and Public Education - Making Sense of Stem Cells

Stem cell science has stirred the imagination of the general public like almost no other scientific field in recent times. The public debate, the source of embryonic stem cells and the high level of hope that patients invest in the science to one day find a cure for many currently incurable diseases, means that stem cell science attracts a high level of scrutiny. Every breakthrough in the field is closely monitored and widely reported upon in both the scientific and mainstream media and across the internet. This means an important activity for any stem cell organisation is effective communication.

To achieve its communications objective, the Centre will direct its activities towards key groups including: the general public; patients and patient advocacy groups; students and teachers; media; government and policy makers; and the biotechnology and biomedical research sector. Across its communications activities, the ASCC will focus on three identified areas of information needs: basic stem cell information; new technologies and breakthroughs; and the application of stem cell science into the clinic.

In fostering the awareness of stem cell research, the ASCC acknowledges and respects that the public has widely differing views about certain types of stem cell research.

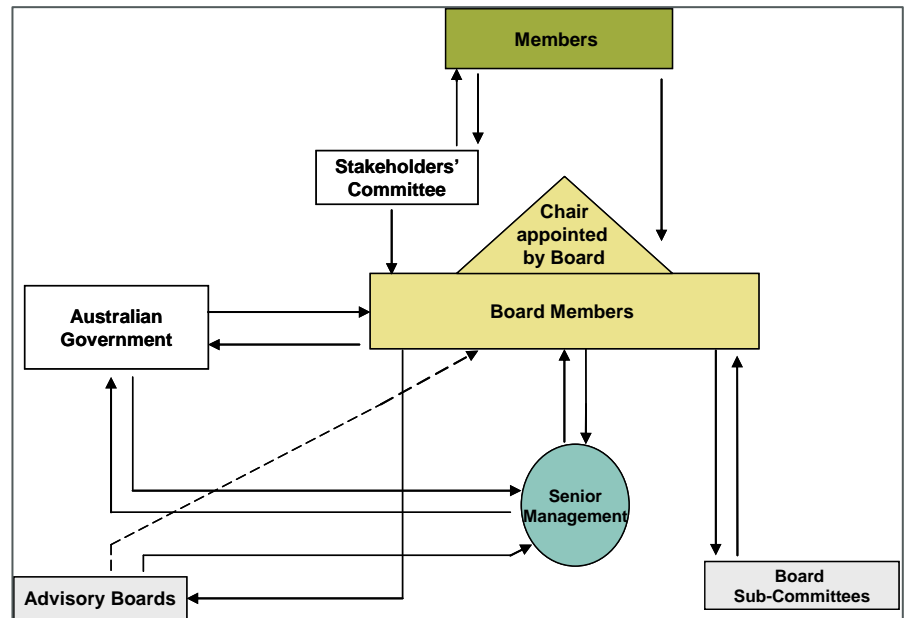
## 13 Governance

The ASCC's Governance model has been developed to ensure best practice is followed. In particular the oversight structure of the ASCC is being refined with the intention that the entire constituency of the ASCC, including the research community, the host institutions, the Australian Government and staff are embraced.

A new Board of Directors has recently been established and is ensuring that the necessary assurance frameworks for audit, risk, remuneration and ethics are in place.

The organisation will be led by both a Scientific Director and a General Manager. This change reflects the need for strong scientific leadership coupled with business and operational experience.

**Governance Structure**



### Members

Monash University

University of Queensland

Howard Florey Institute

University of Adelaide

### Additional Stakeholder Institutes

University of Melbourne

Baker IDI

Murdoch Children's Research Institute

Victor Chang Cardiac Research Institute

Mater Medical Research Institute

### Board

Professor Graham Macdonald (Chair)

Dr Graeme Blackman (Deputy Chair)

Professor Richard Smallwood

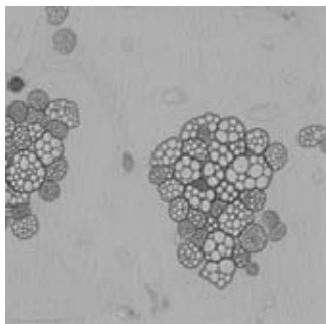
Dr Peter Riddles

Dr Christopher Juttner

Professor Brandon Wainwright (Member Appointee)

Professor Steve Wesseling (Member Appointee)

## 14 Focus on the Future

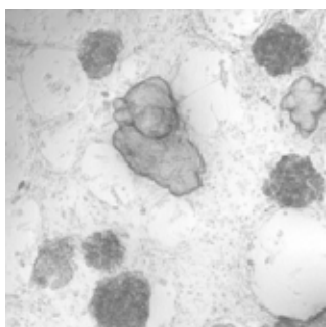


Since its inception, the ASCC has provided support to high calibre Australian researchers across a broad range of stem cell applications with the long term goal of developing new solutions and therapies for the treatment of human diseases. By providing stem cell specific funding, the Centre in its first seven years of operation has supported in excess of 200 researchers and more than 70 students in over 30 research projects across Australia, resulting in over 200 scientific peer reviewed publications. It has worked towards meeting Australia's need for accurate information about the science and provided leadership in the ethical debate and developed stem cell specific IP and commercialisation expertise for the benefit of Australian stem cell science. It has funded and built world class stem cell specific infrastructure and services at the University of Queensland and Monash University which are staffed by individuals with expertise in stem cell technologies.



The ASCC will maintain links with other equivalent international specialist entities to accelerate opportunities to meet human health challenges and to make stem cell therapy a reality for a broad range of debilitating diseases.

The ASCC is currently funded to June 2011. How the ASCC will function beyond that date is a question that the ASCC and the Australian Government are considering. The long-term sustainability of Australian stem cell research is crucial and the role of the ASCC in research and enabling activities is under active consideration.

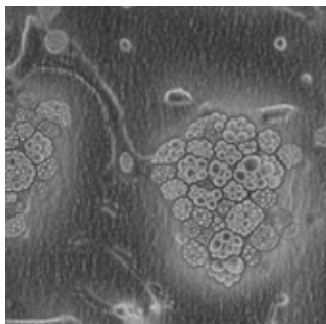


In preparation for June 2011, the reorganisation of research into Collaborative Streams represents a major advance for the Centre. The ultimate goal of this change is to position Australian stem cell research for the future; to realise long-term sustainability and achieve international competitiveness whilst in the interim achieving the best possible scientific outcomes.



Other proposed roles that are central to a future incarnation of the ASCC are in core research services and infrastructure underpinning professional training, project incubation services and advice, intellectual property assessment, advice and management, public advocacy and information and ethical analysis and advice.

Whilst there is uncertainty surrounding beyond 2011, the unique position of the ASCC as Australia's first Biotechnology Centre of Excellence creates a compelling value proposition for stem cell science, the potential for therapies and clinical outcomes, and the prospect of long-term returns for the Australian economy



**Through concerted and coordinated action can the full potential of Australian stem cell research be realised. Australia is well placed to benefit from stem cell research, with its strong foundation of scientific excellence and growing culture of collaboration.**



**Australian  
StemCell  
Centre**

**Australian Stem Cell Centre Limited**

ABN 84 101 957 251

**Victoria**

Ground Floor Building 75 (STRIP)  
Monash University, Wellington Road  
Clayton, Victoria, 3800 Australian  
PO Box 8002, Monash University LPO  
Victoria 3168 Australia  
Tel +613 9271 1100  
Fax +613 9271 1199

**Queensland**

Level 2 Building 75 (AIBN)  
Corner of Cooper and College Roads  
University of Queensland  
St Lucia Campus  
Queensland 4075 Australia  
Tel +617 3346 3485  
Fax +617 3346 3482